



Sheridan

—WYOMING—

LIFESTYLE — DEMOGRAPHICS — CULTURE



WELCOME TO SHERIDAN, WYOMING.

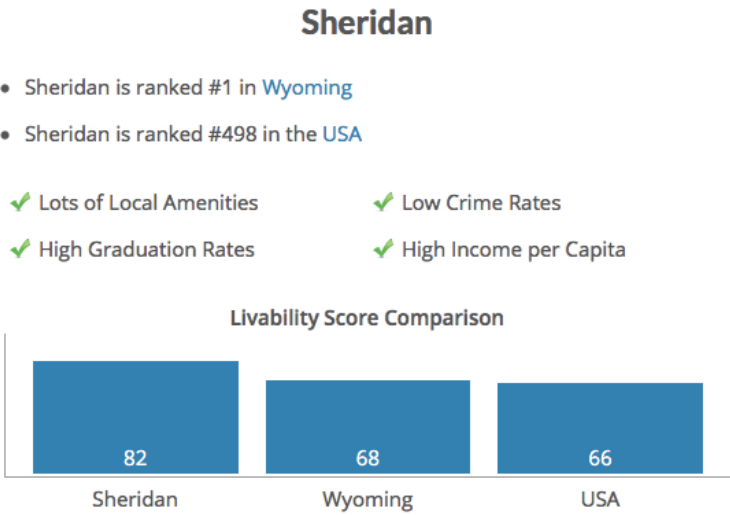
The world comes out west expecting to see cowboys driving horses through the streets of downtown; pronghorn butting heads on windswept bluffs; clouds encircling the towering granite pinnacles of the Bighorn Mountains; and endless expanses of wild, open country. These are some of the fibers that have been stitched together over time to create the patchwork quilt of Sheridan's identity, each part and parcel to the Wyoming experience. But what you may not have been expecting when you came way out West was a thriving, historic downtown district, with western allure, hospitality and good graces to spare; a vibrant art scene; excellent education and health care systems; bombastic craft culture; a robust festival and events calendar; and living history on every corner.

At first blush, picturesque Sheridan is all archetypal mountain verve and Wyoming vigor, but there's an artistic dynamism and cultural allure here that belies its cow town reputation. Sheridan's ranching roots run centuries deep, but so too does its polo legacy. The flagship Sheridan WYO Rodeo draws nearly 30,000 visitors to town every July, while the WYO Theater, Brinton Museum and the Whitney Center for the Arts have become artistic touchstones with significant regional cache. National attractions abound – the Historic Sheridan Inn is a siren song to the legend and lore of the Wild West; the ancient Medicine Wheel, at an altitude of 9,462-feet, lords over the mountains with a mystical presence that defies explanation; and Indian battle sites like Fort Phil Kearny, the Fetterman Fight, and the Wagon Box Fight, all located along the Bozeman Trail, offer endless educational and historical attractions.

There's an undercurrent of the carefree in Sheridan, and the legendary hospitality of its proud residents is worn like a badge of honor. Blessed by mountain topography and evenly spaced between Yellowstone National Park and Mount Rushmore and Badlands National Park, there's a sense about town that Sheridan is poised to be the Next Big Thing, though those in the know understand that it always has been. We're here to answer any questions you may have about Sheridan and Wyoming, and want to be the first to welcome you home.

*SHAWN PARKER, EXECUTIVE DIRECTOR
SHERIDAN TRAVEL & TOURISM
SHERIDANWYOMING.ORG*

*DIXIE JOHNSON, CHIEF EXECUTIVE OFFICER
SHERIDAN COUNTY CHAMBER OF COMMERCE
SHERIDANWYOMINGCHAMBER.ORG*



Sheridan

Sheridan



HISTORIC DOWNTOWN SHERIDAN



PACKED HOUSE AT THE WYO RODEO



EATON'S HORSE DRIVE AND THE SHERIDAN INN



THE BIGHORN NATIONAL FOREST

Sheridan

Sheridan

LIFE IN SHERIDAN, WY



CLOCKWISE, THIS PAGE:
SHERIDAN BICYCLE CO.
SHERIDAN FARMERS' MARKET
3RD THURSDAY STREET FESTIVAL
SUDS N' SPURS BREWFEST

CLOCKWISE, OPPOSITE PAGE:
KING'S SADDLERY
THE SHABBY SHACK
BLACK TOOTH BREWING CO.
TWISTED HEARTS
WESTON WINES TASTING ROOM
THE MINT BAR



Sheridan

Sheridan

LIFE IN SHERIDAN, WY

COUNTY POPULATION 30,200	MEDIAN AGE 42.2	HIGH SCHOOL GRADUATION RATE 94.1%
MEDIAN HOUSEHOLD INCOME \$55,455	NUMBER OF EMPLOYEES 14,336	MEDIAN PROPERTY VALUE \$228,000

With a population of 17,873 people and six constituent neighborhoods, Sheridan is the sixth largest city in Wyoming. Bedroom communities in Sheridan County include Ranchester, Dayton, Big Horn, Story, Arvada, Clearmont, and Ucross, for a total population of 30,200.

29.63% of adults in Sheridan have obtained at least a bachelor’s degree, vs. the American average of 21.84%. Sheridan’s workforce is spread across a diverse landscape of industries, including: educational, health and social services (22.6%); agriculture, forestry, fishing and hunting, and mining (15.5%); professional, scientific, management, administrative, and waste management services (15.5%); construction (12.4%); arts, entertainment, recreation, accommodation and food services (10.2%).

Residents report some of the shortest commute times in the country at an average of 13.74 minutes per day.

Sheridan is home to more than 40 foundations, non-profit groups, and community organizations, with a strong focus on education, the arts, senior care, recreation, and history.

Air service is provided by Denver Air Connection, with two daily return flights between Sheridan County Airport (SHR) and Denver International Airport (DEN).

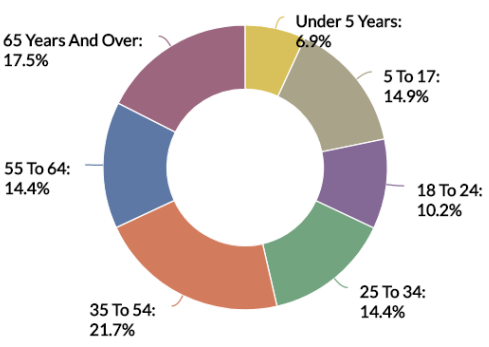
Sheridan sits at the base of the Bighorn Mountains, at an elevation of 3,742 feet. Sheridan is 130 miles southeast of Billings, MT (2hr drive), 430 miles north of Denver, CO (6hr drive), and 204 miles east of Yellowstone National Park (4.5hr drive).



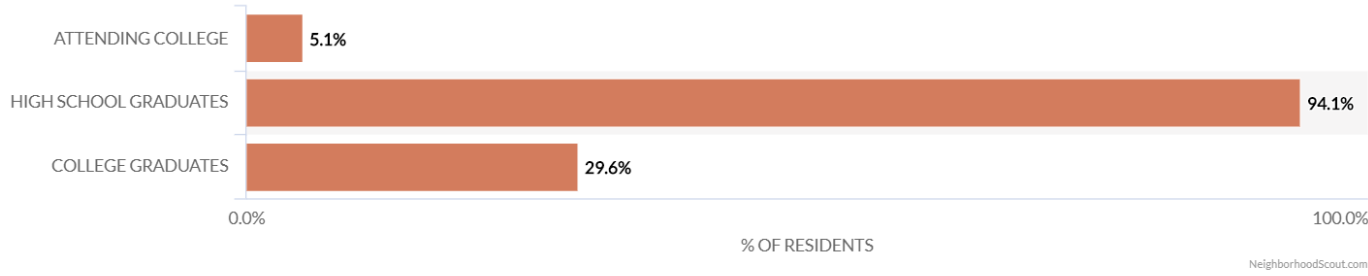
SHERIDAN POPULATION & AGE DISTRIBUTION



AGE



EDUCATIONAL ATTAINMENT OF ADULTS



INCOME

Household Income

Please note that the buckets used in this visualization were not evenly distributed by ACS when publishing the data.

\$55,455 **12,578**

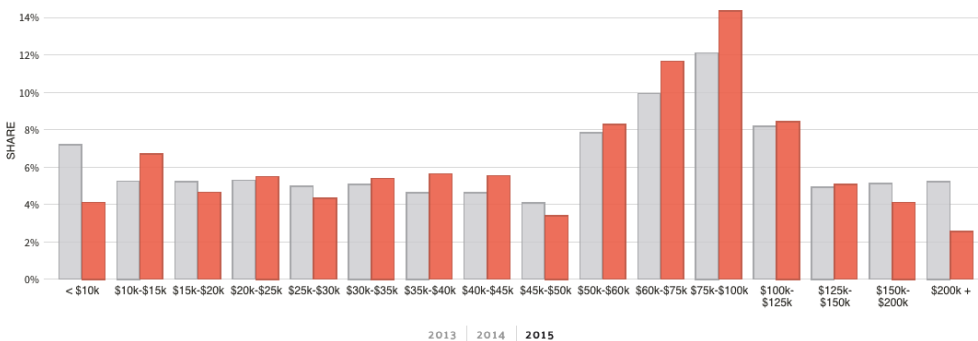
MEDIAN HOUSEHOLD INCOME NUMBER OF HOUSEHOLDS

± \$3,115 ± 274

In 2015, the median household income of the 12,578 households in Sheridan County, WY declined to \$55,455 from the previous year's value of \$56,015.

The following chart displays the households in Sheridan County, WY distributed between a series of income buckets compared to the national averages for each bucket. The largest share of households have an income in the \$75-\$100k range.

Dataset: ACS 5-year Estimate
Source: Census Bureau



DEMOGRAPHICS

Sheridan Housing Information - Census

Index	Sheridan	Wyoming	National
Median home price	\$189,300	\$189,300	\$175,700
Median rent asked	\$758	\$778	\$920
Avg. people per household	2.2	2.5	2.6
Owner occupied households	62.3%	69.3%	64.4%
Renter occupied households	37.7%	30.7%	35.6%

Sheridan Housing Information - Zillow

Index	Sheridan	Wyoming	National
Zillow home value index	n/a	\$193,500	\$196,500
Year over year appreciation rate	n/a	0.52%	6.79%
5 year average appreciation rate	n/a	1.29%	5.28%
10 year average appreciation rate	n/a	0.78%	0.01%

Sheridan Cost Of Living Index

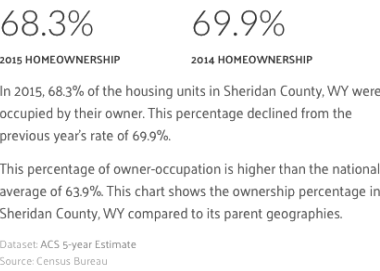
Index	Sheridan	Wyoming	National
Cost of living index	99	97	100

Index	Sheridan	Wyoming	National
Goods & Services index	98	90	100
Groceries index	100	99	100
Health care index	104	99	100
Housing index	100	101	100
Transportation index	101	101	100
Utilities index	92	99	100

In the event that the cost of living data was unavailable for this city, estimates based upon nearby cities were used. Each cost of living index is based on a national average of 100. If the amount is below 100, it is lower than the national average. If the amount is above 100, it is higher than the national average.

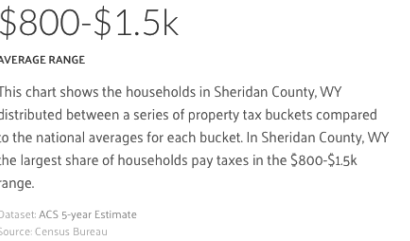
A general summary of the cost of living index in Sheridan, WY is shown above. Compared to the state average of Wyoming the cost of living index in Sheridan, WY is 99, which is 2% higher than the average in Wyoming and compared to the national average it is 1% lower than. The cost of living index is made up of several categories. These are transportation at 9%, utilities at 10%, goods and services at 33%, housing at 30%, groceries at 13%, and health care at 5%. The bulk of the cost of living index comes from the categories of goods and services and housing. If you look at everyday goods and services they can be a good indicator in a certain city of the general costs of goods there. In Sheridan, WY goods and services come in at 9% higher than the average in Wyoming and are 3% lower than compared to the nationwide average.

Rent vs Own



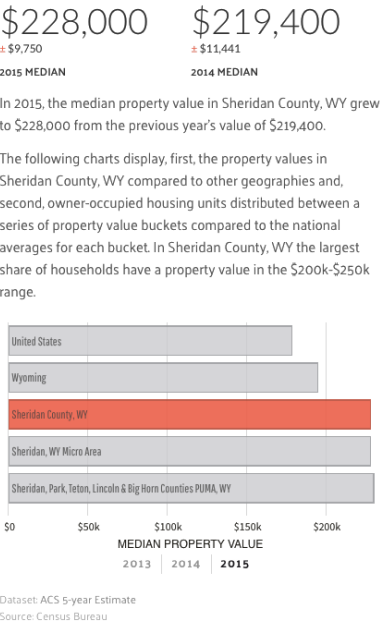
-
-
-
-
-
-
-
-

Property Taxes



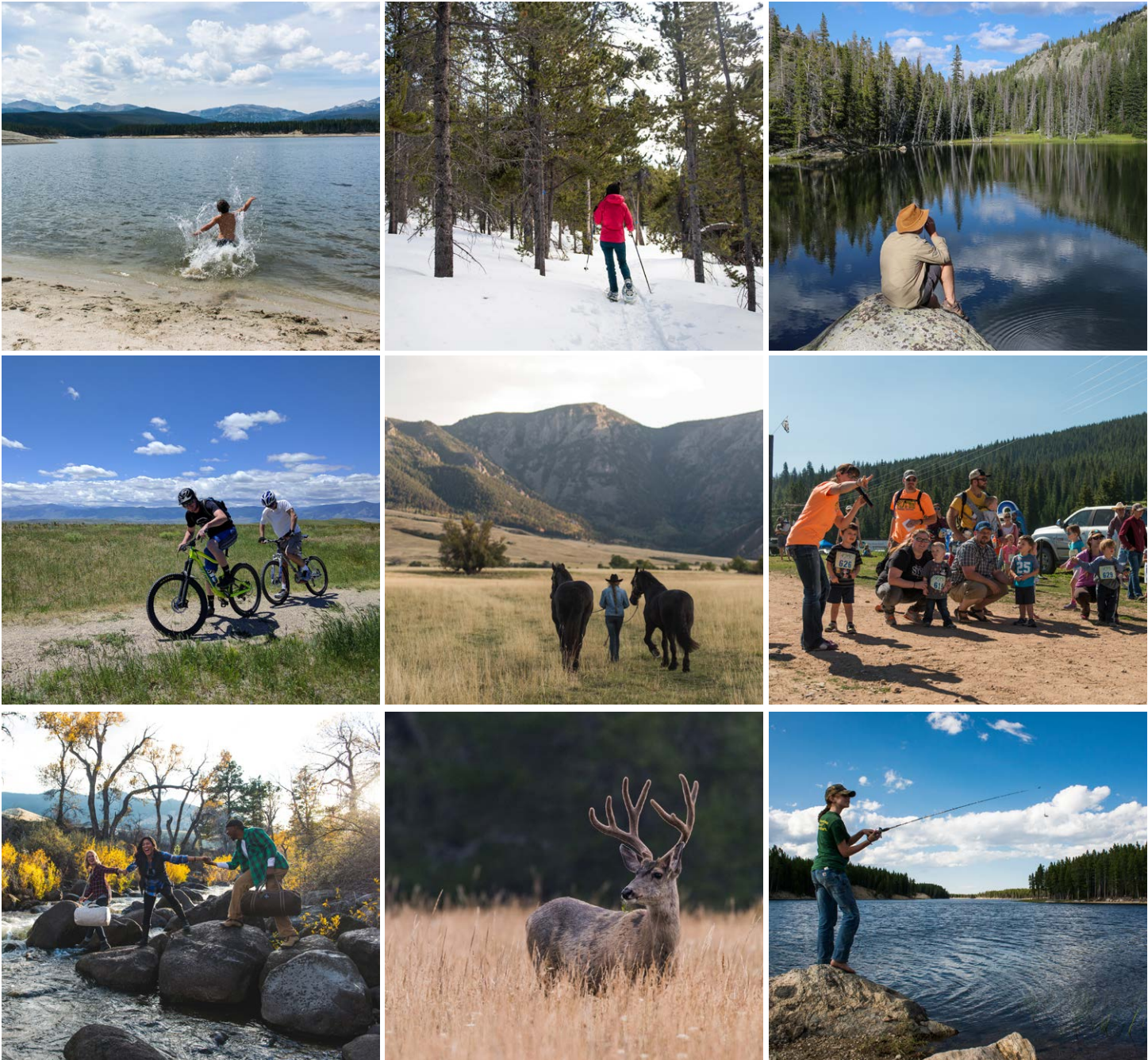
HOUSING

Property Value



OUTDOOR RECREATION

The Bighorn National Forest features 1,500 miles of trails, 32 campgrounds, numerous lodges, three scenic US byways, and the Antelope Butte Mountain Recreation Area. Climbers travel from across the country to test their mettle in Crazy Woman canyon, while runners and bikers compete during the Bighorn Trail Run, Dead Swede 100, and other races. Hunters, hikers, backpackers, skiers, fishing, equine, ATV, and snowmobile enthusiasts have long considered the Bighorns one of the best-kept outdoor secrets in the Mountain West.



LIFESTYLE & CULTURE

A breathtaking vision of the New West, Sheridan is Wyoming's emerald city. Life and leisure here is built on history, heritage, and recreation. This is a place where cowboys convene over craft beer and coffee, where guests marvel at public art and historic architecture, and where modern mavericks revel in Old West charm at bistros, cafes and wineries. Entrepreneurs, ranchers and artists kick through the doors of the Mint Bar, coal-hauling trains roar through the Rail District, and Downtown Sheridan remains a beacon of life well lived in Wyoming.



Sheridan

Sheridan

EDUCATION

STUDENT TO TEACHER RATIO 13:1	STATE RANK FOR ENGLISH AND MATH 1	INTERSCHOLASTIC SPORTS PART. 51.9%
HIGHER EDUCATION DEGREE (POP.) 65.5%	GATE PROGRAM PARTICIPATION 6.6%	AP COURSE ENROLLMENT 17.4%



Sheridan has one of the top education systems in Wyoming and the western United States. Sheridan County has three school districts, with schools that have been recognized with National Blue Ribbon Program awards.

Sheridan public schools spend \$19,104 per student. The average school expenditure in the U.S. is \$12,383.

Sheridan College is committed to helping students achieve their academic goals through personal attention, an array of courses and degrees, and more than \$3 million in scholarships and financial aid awards. Sheridan College proudly offers new, adaptive, flexible spaces to learn in a breathtaking setting and supportive community in Northern Wyoming.

The Hathaway Scholarship: Eligible students graduating from Wyoming high schools are rewarded with a scholarship of up to \$1,600 per semester to attend the University of Wyoming or a Wyoming community college.

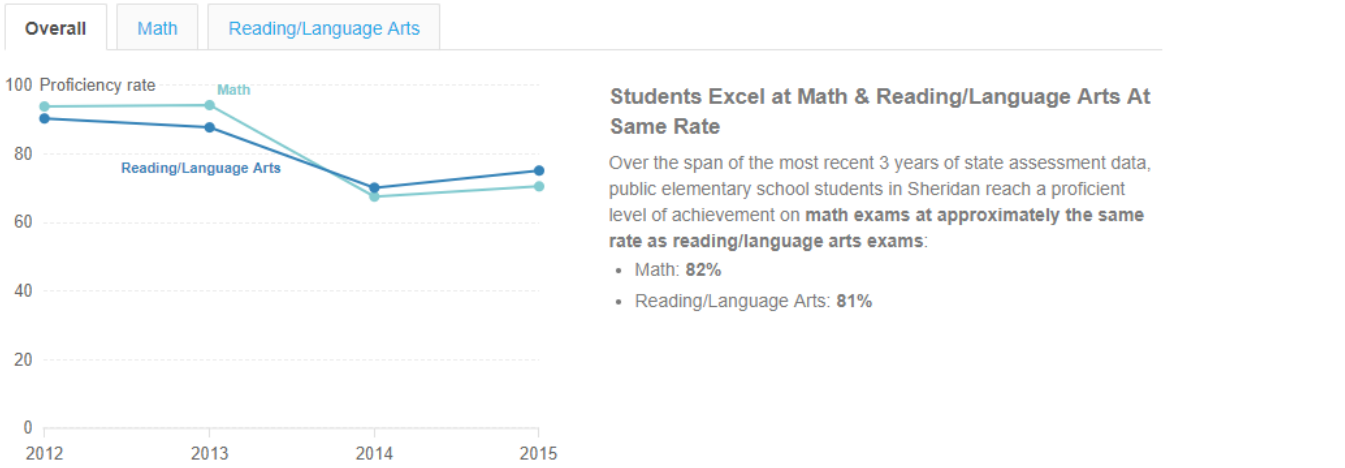
Whitney Benefits Student Loans: Sheridan students who need additional assistance or who will be pursuing undergraduate degrees at out-of-state colleges can borrow up to \$24,000 interest free through Whitney Benefits, one of over 40 foundations and philanthropic organizations located in Sheridan County. Over the timeline of the fund, Whitney has loaned over \$33.5 million to nearly 5,400 area students.

EDUCATIONAL EXPENDITURES

FOR THIS DISTRICT	PER STUDENT	TOTAL	% OF TOTAL
Instructional Expenditures	\$8,873	\$8,562,445	46.4%
Support Expenditures			
Student	\$931	\$898,415	4.9%
Staff	\$926	\$893,590	4.8%
General Administration	\$544	\$524,960	2.8%
School Administration	\$1,164	\$1,123,260	6.1%
Operation	\$1,858	\$1,792,970	9.7%
Transportation	\$745	\$718,925	3.9%
Other	\$711	\$686,115	3.7%
Total Support	\$6,879	\$6,638,235	36.0%
Non-instructional Expenditures	\$3,352	\$3,234,680	17.5%
Total Expenditures	\$19,104	\$18,435,360	100.0%

Public Elementary Schools

Elementary School State Assessment Performance Over Time



Sheridan

—WYOMING—

SHERIDAN IN THE NEWS

2017

BEST PLACE TO LIVE LIKE AN OLD WEST COWBOY — TRUE WEST MAGAZINE
BEST PROMOTION OF AN HISTORIC PLACE — TRUE WEST MAGAZINE
THE WEST'S BEST MAIN STREETS, RUNNER UP — SUNSET MAGAZINE
1,000 PLACES TO SEE IN THE US AND CANADA BEFORE YOU DIE
BEST WYOMING ATTRACTION, 3RD PLACE — USA TODAY
25 HAPPIEST SMALL TOWNS IN AMERICA — COUNTRY LIVING MAGAZINE

2016

TOP WESTERN TOWNS: WHERE HISTORY LIVES — TRUE WEST MAGAZINE
BEST PLACE TO RAISE AN OUTDOOR FAMILY, RUNNER UP — ELEVATION OUTDOORS

2015

BEST TOWN IN AMERICA, FINALIST — OUTSIDE MAGAZINE
TOP 100 SMALL TOWNS IN THE USA — LIVABILITY MAGAZINE

2014

BEST PLACE TO LIVE LIKE AN OLD WEST COWBOY — TRUE WEST MAGAZINE
BEST TOWN IN AMERICA, FINALIST — OUTSIDE MAGAZINE
TOP 10 MOUNTAIN TOWNS IN THE USA — NORTH AMERICAN HUNTER MAGAZINE
TOP 20 SMALL TOWNS IN THE USA, #2 — CITY DESCRIBED
TOP 15 TRAILS IN THE WEST — SNOWEST

2013

BEST SMALL TOWNS — BEST OF THE ROAD
TOP 15 TRAILS IN THE WEST — SNOWEST

2012

TOP 100 ADVENTURE TOWNS — NATIONAL GEOGRAPHIC ADVENTURE
TOP 10 BEST SMALL TOWNS — LIVABILITY
TOP 15 TRAILS IN THE WEST — SNOWEST