



OFFICIAL PROGRAM 2019



*WYOMING IS
TESTIMONY TO WHAT
PEOPLE ARE
CAPABLE OF IF YOU
GIVE THEM
ENOUGH SPACE.*

— SAM MORTON —

WELCOME TO THE SHERIDAN WYO. WINTER RODEO

*PRESENTED BY
SHERIDAN TRAVEL & TOURISM AND
THE SHERIDAN WYO RODEO*

Wyoming's emerald jewel, Sheridan's fabled western history and dramatic mountain vistas meet new west comfort and the serenity of wide-open spaces. Providing history with a view – from Main Street to the magnificent backdrop of the Bighorn Mountains – Sheridan offers modern hospitality with old west charm.

The Sheridan WYO Winter Rodeo is an opportunity for our community to share why winter in Wyoming is such a magical time of year. Our skijoring series, hosted downtown on February 23, blends our equestrian heritage and outdoor lifestyle, while ski and sled day on Red Grade Trails, and events at the Antelope Butte Mountain Recreation Area, celebrate the beauty and majesty of the Bighorns. Thank you to all of our sponsors and volunteers who have made this possible. We're thrilled to have you here, and we hope to see you again soon.

44°47'48"N 106°57'32"W

Sheridan has a total area of 10.95 square miles

10.93/sq mi land | 0.02/sq mi water

ELEVATION 3,743

POPULATION 17,954

AVERAGE SUNNY DAYS PER YEAR: 208

AVERAGE ANNUAL SNOWFALL: 71"

July is the warmest | January is the coolest

Record High 107°

Record Low -41°

SHERIDANWYOMING.ORG

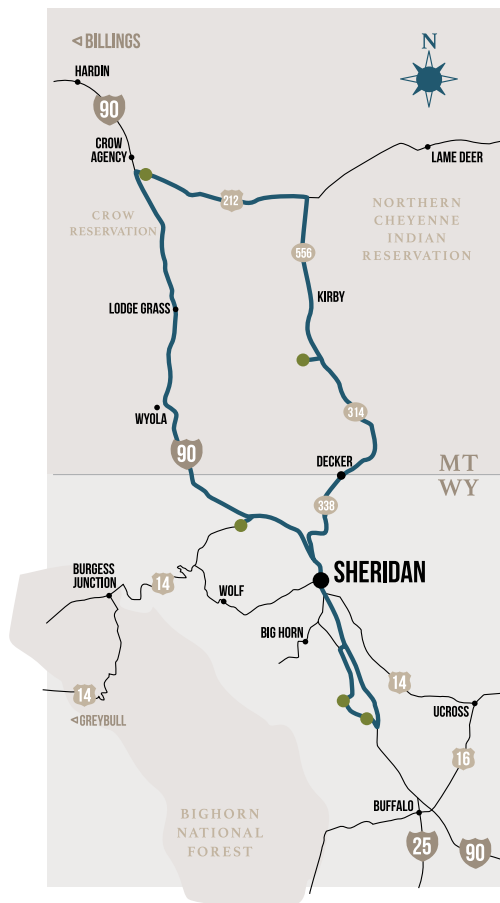
The world comes out west expecting to see cowboys driving horses through the streets of downtown; pronghorn butting heads on windswept bluffs; clouds encircling the towering granite pinnacles of the Bighorn Mountains; and endless expanses of wild, open country. These are some of the fibers that have been stitched together over time to create the patchwork quilt of Sheridan's identity, each part and parcel to the Wyoming experience.

What you may not have been expecting when you came way out West was a thriving, historic downtown district, with western allure, hospitality and good graces to spare; a vibrant art scene; bombastic craft culture; a robust festival and events calendar; and living history on every corner.

SHERIDAN IS AN EPIC WINTER WONDERLAND.

At first blush, picturesque Sheridan is all archetypal mountain verve and Wyoming vigor, but there's an artistic dynamism and cultural allure here that belies its cow town reputation. Sheridan's ranching roots run centuries deep, but so too does its polo legacy. The flagship Sheridan WYO Rodeo draws nearly 30,000 visitors to town every July, while the WYO Theater, Brinton Museum and the Whitney Center for the Arts have become artistic touchstones with significant regional cache.

National attractions abound – the Historic Sheridan Inn is a siren song to the legend and lore of the Wild West; Eaton's Ranch is the oldest continuously operated dude ranch in the nation; the ancient Medicine Wheel, at an altitude of 9,462-feet, lords



SHERIDAN IS POISED TO BE THE NEXT BIG THING. THOSE IN THE KNOW UNDERSTAND IT ALWAYS HAS BEEN.

over the mountains with a mystical presence that defies explanation; and Indian battle sites like Fort Phil Kearny, the Fetterman Fight, and the Wagon Box Fight, all located along the Bozeman Trail, offer endless educational and historical attractions.

And we haven't even mentioned the winter. Sheridan is quickly becoming an epic winter wonderland, known throughout the west as a premiere snowmobile, x-country skiing, fat biking, alpine, and snowshoeing destination. The Antelope Butte Mountain Recreation Area began welcoming skiers again this year, and the Sheridan WYO Winter Rodeo's first year is positioned as a hallmark winter event. We're thrilled to have you here with us.

Sheridan's location at the base of the legendary Bighorn Mountains has long made it an outdoor recreation paradise; with 1,500 miles of trails, more than 30

campgrounds, two ski areas, numerous mountain lodges, and the 189,039-acre Cloud Peak Wilderness, the Bighorn National Forest is a premiere destination for bikers, skiers, fishing enthusiasts, snowmobilers, hikers, campers, climbers, hunters, and everyone with big dreams of the Great Outdoors.

There's an undercurrent of the carefree in Sheridan, and the legendary hospitality of its proud residents is worn like a badge of honor. Blessed by mountain topography and evenly spaced between Yellowstone National Park and Mount Rushmore and Badlands National Park, there's a sense about town that Sheridan is poised to be the Next Big Thing, though those in the know understand that it always has been.

SHAWN PARKER
EXECUTIVE DIRECTOR
SHERIDAN TRAVEL & TOURISM



SHERIDAN WYO WINTER RODEO FEBRUARY 22 - 24, 2019

The inaugural Sheridan WYO Winter Rodeo comes to town February 22 - 24, 2019. The highlight of this event is a skijoring competition sanctioned by Skijoring America.

Skijoring is a sport where a person on skis is pulled by a horse along a course marked with jumps and other obstacles. Sheridan's skijoring course will be located on Broadway, beginning at Luminous Brewhouse and ending at Black Tooth Brewery.

Skijoring regularly attracts thousands of visitors to towns across the Mountain West, and with a course in the heart of our historic downtown, Sheridan's event will be a draw unlike any other. For more information please visit sheridanwyoming.org

SHERIDAN WYO WINTER RODEO SCHEDULE OF EVENTS

REGISTRATION ICE BREAKER	BLACK TOOTH BREWING	FRI, FEB 22 - 5:00PM
IAN MUNSICK CONCERT	THE WYO THEATER	FRI, FEB 22 - 7:00PM
NITRO JAVA & DOUGHNUTS	LUMINOUS BREWHOUSE	SAT, FEB 23 - 8:00AM
SKIJORING RACES*	BROADWAY STREET	SAT, FEB 23 - 9:00AM
89TH WYO RODEO TICKET SALES	THE WYO THEATER	SAT, FEB 23 - 10:00AM
SMITH ALLEY SNOW FEST	SMITH ALLEY BREWING	SAT, FEB 23 - 12:00PM
WINTER RODEO CELEBRATION	BLACK TOOTH BREWERY	SAT, FEB 23 - 5:00PM
RED GRADE SKI AND SLED DAY	RED GRADE TRAILS	SUN, FEB 24 - 10:00AM

*SKIJORING RACES BEGIN AT 9:00AM AT LUMINOUS BREWHOUSE AND RUN THROUGHOUT THE DAY. FOOD TRUCKS, VENDORS AND MORE WILL BE LOCATED AT BOTH BLACK TOOTH AND LUMINOUS.

2019 SHERIDAN WYO WINTER RODEO
SHERIDANWYOMING.ORG

QUESTIONS? CONTACT BAILEY MCLEAN AT
BAILEY@SHERIDANWYOMING.ORG OR 307-673-7120



THANK YOU TO ALL OF OUR 2019 SHERIDAN WYO WINTER RODEO COMMUNITY SPONSORS

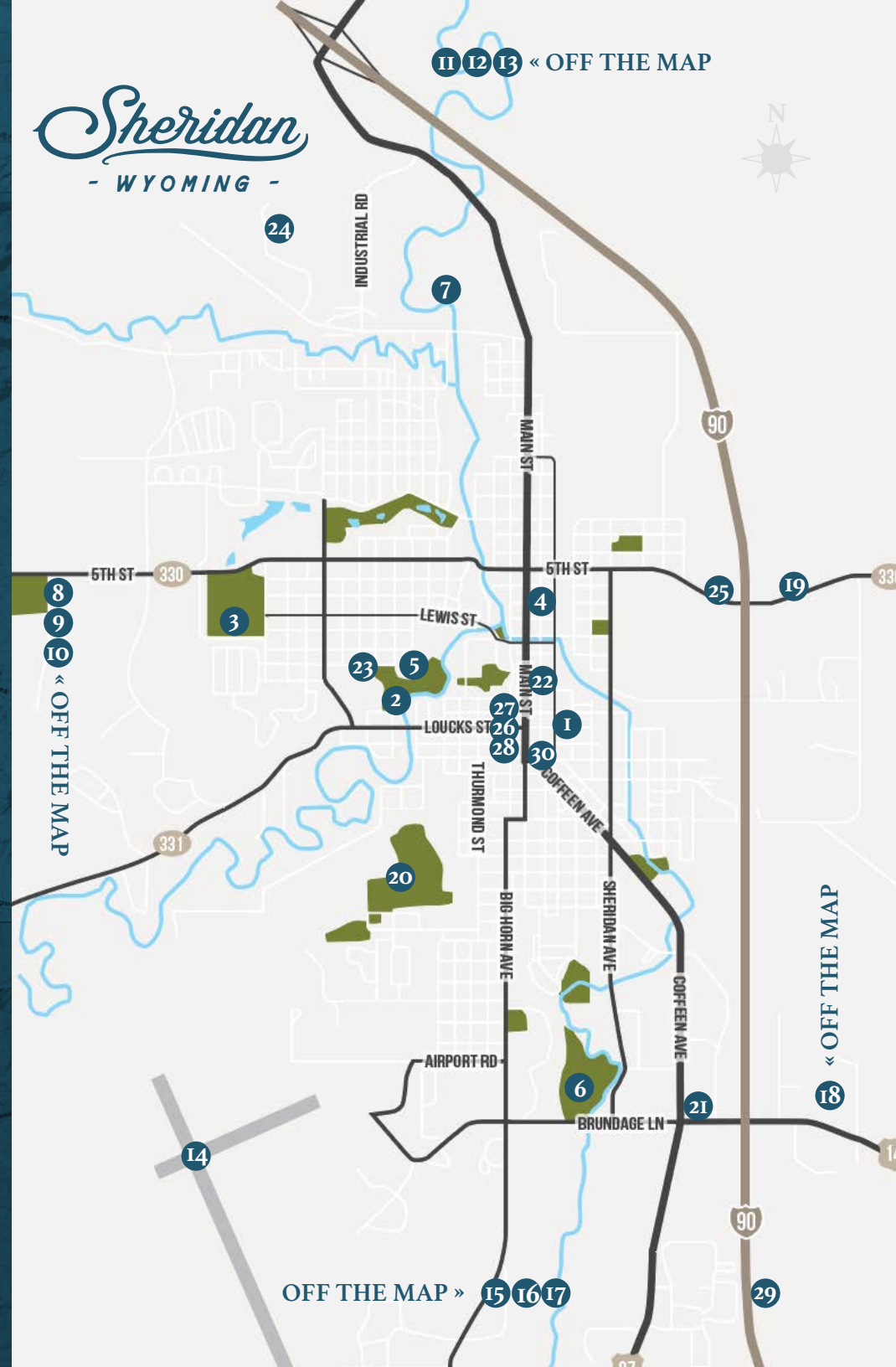


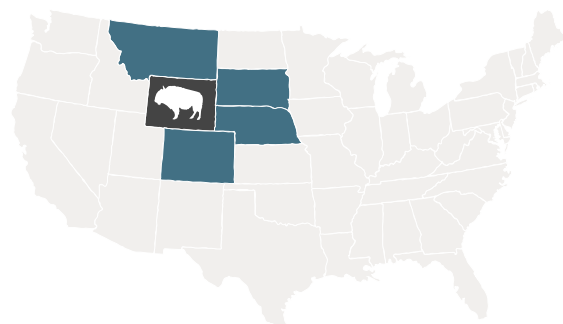
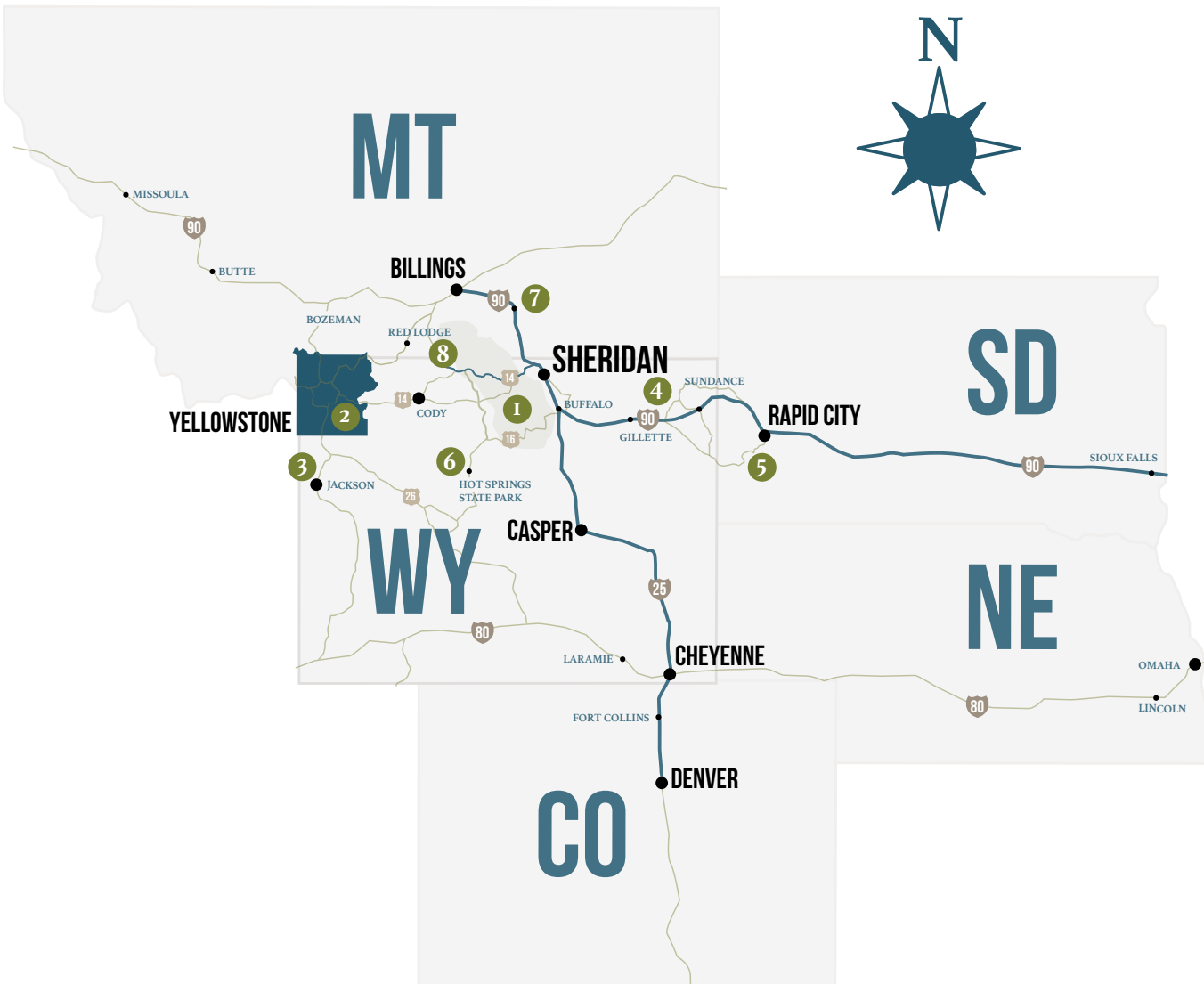
Sheridan
Community
LAND TRUST



LOCAL ATTRACTIONS

- 1 - HISTORIC DOWNTOWN SHERIDAN
- 2 - KENDRICK PARK
- 3 - SHERIDAN COUNTY FAIRGROUNDS
- 4 - THE HISTORIC SHERIDAN INN
- 5 - TRAIL END STATE HISTORIC SITE
- 6 - SOUTH PARK NATURAL AREA
- 7 - NORTH PARK NATURAL AREA
- 8 - BLACK TOOTH PARK
- 9 - SOLDIER RIDGE TRAIL
- 10 - EATON'S RANCH
- 11 - THE TOWN OF RANCHESTER
- 12 - THE TOWN OF DAYTON
- 13 - BIGHORN NATIONAL FOREST
- 14 - SHERIDAN COUNTY AIRPORT
- 15 - THE BRINTON MUSEUM
- 16 - BIG HORN EQUESTRIAN CENTER
- 17 - THE POWDER HORN
- 18 - UCROSS FOUNDATION
- 19 - SHERIDAN INFORMATION CENTER
- 20 - MOUNT HOPE/MUNICIPAL CEMETERY
- 21 - THE MILL INN
- 22 - BLACK TOOTH BREWING CO.
- 23 - BISON AND ELK PADDOCK
- 24 - FORT MACKENZIE (VA MEDICAL CENTER)
- 25 - SHERIDAN COUNTY MUSEUM
- 26 - THE MINT BAR
- 27 - KING'S SADDLERY AND DON KING MUSEUM
- 28 - THE WYO THEATER
- 29 - FORT PHIL KEARNY
- 30 - DAVINCI'S HORSE





SHERIDAN, WY

Blessed by Bighorn Mountain topography and evenly spaced between Yellowstone National Park and Mount Rushmore, Sheridan is the Western experience you've been waiting for.

This is where frontier history, mountain recreation and Old West charm conspire to deliver the travel experience of a lifetime. Sheridan features a thriving, historic downtown district, with western allure, hospitality and good graces to spare; a vibrant arts scene; bombastic craft culture; a robust festival and events calendar; and living history from one corner of the County to the next. sheridanwyoming.org

REGIONAL ATTRACTIONS

Time and estimated Mileage from Sheridan, WY

- 1 BIGHORN NATIONAL FOREST**
35 MILES, 40 MINUTES
 Established in 1897. Elevations range from 5,000 feet along the sagebrush and grass-covered lowlands at the foot of the mountains, to 13,189 feet on top of Cloud Peak, the highest point in the Bighorns. Within the forest is the Cloud Peak Wilderness. There are 1,500 miles of trails in the forest, along with 32 campgrounds, Medicine Wheel, lodges, and three scenic byways.
- 2 YELLOWSTONE NATIONAL PARK**
200 MILES, 4 HOURS
 The nation's first national park was established in 1872. Nearly 3,500-sq.-mile wilderness recreation area atop a volcanic hot spot, featuring its most famous geyser, Old Faithful.
- 3 GRAND TETON NATIONAL PARK**
350 MILES, 6.25 HOURS
 Wyoming's second national park features the magnificent Teton range, the valley known as Jackson Hole, the resort community of Jackson, and some of the finest wildlife viewing in the world.
- 4 DEVILS TOWER NATIONAL MONUMENT**
165 MILES, 2.5 HOURS
 An astounding geologic feature that protrudes out of the prairie surrounding the Black Hills. It is considered sacred by Northern Plains Indians and indigenous people.
- 5 MOUNT RUSHMORE NATIONAL MEMORIAL**
245 MILES, 3.5 HOURS
 A massive sculpture featuring 60-ft.-high granite faces depicting U.S. presidents George Washington, Thomas Jefferson, Theodore Roosevelt and Abraham Lincoln.
- 6 THERMOPOLIS HOT SPRINGS STATE PARK**
160 MILES, 3 HOURS
 The hot springs flow at a constant temperature of 135° Fahrenheit. Offers free bathing at the State Bath House, where temperatures are moderated to a therapeutic 104°F. The petroglyph site at Legend Rock, some 25 miles away, is also part of the park.
- 7 LITTLE BIGHORN BATTLEFIELD MONUMENT**
71 MILES, 65 MINUTES
 Preserves the site of the June 25-26, 1876, Battle of the Little Bighorn, near Crow Agency, MT. Serves as a memorial to those who fought in the battle: George Armstrong Custer's 7th Cavalry and a combined Lakota-Northern Cheyenne and Arapaho force.
- 8 BIGHORN CANYON NATIONAL RECREATION AREA**
115 MILES, 2.25 HOURS
 Established in 1966, following the construction of the Yellowstone Dam. Straddles the border between Wyoming and Montana. About one third of the park is located on the Crow Indian Reservation. One-quarter of the Pryor Mountains Wild Horse Range lies within the Bighorn Canyon National Recreation Area.

WELCOME TO THE WORLD OF SKIJORING!

(WHAT IS SKIJORING, EXACTLY?)



Skijoring is a competition in which a horse and rider pull a skier at a fast pace through a course that has gates, jumps and rings. The skier is timed through the course, and penalties are assessed by missing gates or jumps, and by missing or dropping any of the rings (two seconds each). The competitors race for cash, buckles, and other great prizes. More informal competitions are held on flat ground over short courses, often as simple sprint races on a straightaway, sometimes with turns on the course. The straight course allows the horse to run at top speed down the middle of the course with the skier navigating slalom gates and jumps ranging from two to seven feet high, set on either side of the horse track.

Competitors often use short skis and modified water-skiing towing equipment, though often this is as simple as a single tow rope looped around the horn or attached to the back of a western saddle. Some variants in equipment attach two towing lines to either the back of a saddle

or the breastplate on the horse. The horses are equipped with safety gear such as splint boots and bell boots that protect their legs during the fast-paced race. Western saddles are most commonly used in skijoring due to their sturdy build and pulling ability.

At races, there are typically three classes of teams: Pro/Open, Sport and Novice and there can often be Women's, Youth, Legend and Snowboard divisions. It is not uncommon for 100 teams to compete each day over a racing weekend, prize purses to be in the thousands and a Calcutta, a form of betting pool, is usually held at a local bar.

The Sheridan WYO Winter Rodeo welcomes five classes of teams in 2019: Open, Sport, Novice, Youth and Snowboard. The Sheridan WYO Winter Rodeo strives to introduce competitors and spectators to the sport of Equestrian Skijoring and welcomes all skijoring fans to Sheridan, Wyoming.



BLACK TOOTH

SKIJORING • LIVE MUSIC • FOOD • AFTER PARTY



FEBRUARY 22ND

- ▶ REGISTRATION AT 5PM
- ▶ CALCUTTA AUCTION
- ▶ BAND AT 6PM - "THE WENCH"
- ▶ BONAFIDE ON SITE

FEBRUARY 23RD

- ▶ SKIJORING AT 9AM
- ▶ HETTYS PIZZA ON SITE
- BREAKFAST PIZZA
- ▶ WYO BUCKIN BEANS
- ▶ SKIJORING AWARDS AT 5PM
- ▶ BAND - "SHOT IN THE FOOT"

BRINK THE WEST

WYO WINTER RODEO



SKIJORING 101.

A CRASH COURSE IN GETTING WYO'D.

SKIJORING IS THE WILDEST SPORT IN THE WEST. IF THIS IS YOUR FIRST TIME SITTING IN THE SADDLE OR THE SKI BOOTS, THESE ARE THE MOST IMPORTANT PIECES OF EQUIPMENT (AND SAFETY GEAR). OUR ATTORNEYS APPRECIATE YOUR ATTENTION.

HELMET.

PROTECTION FOR YOUR
SOFT BITS.

SKI RACER.

THE ONE CRAZY ENOUGH TO
THINK THIS IS A GOOD IDEA.

CAMERA MOUNT.

THERE'S A HERO IN ALL
OF US.

GOGGLES.

PEEPER PROTECTION.

CARABINER.

ROPE SECURITY.

WESTERN GARB.

WELCOME TO SHERIDAN,
WYOMING.

COWGIRL.

THE ONE WITH A GREAT
VIEW OF THE ACTION.

COWBOY HAT.

DRESS FOR SUCCESS.

SADDLE.

WHERE ELSE
WOULD YOU SIT?

OUTERWEAR.

LOCAL HABERDASHERY.

SKI PANTS.

BECAUSE NAKED SKIING
IS SO WRONG.

ROPE.

HANG ON TO YOUR
DREAMS OF GLORY.

SNOW.

THE ALTERNATIVE IS
CONCRETE.

SKI BOOTS.

SANDALS WOULD LOOK
RIDICULOUS.

ALPINE SKIS.

BUILT FOR SPEED. AND
WICKED JUMPS.

HORSE.

FASTER THAN A DOG.

BOOTS.

SAFETY FIRST.

BIT.

TOM BALDING SPECIAL.
FORM MEETS FUNCTION.





ANTELOPE BUTTE MOUNTAIN RECREATION AREA WELCOMES YOU

Natural snow and \$20 lift tickets might sound like a long-ago memory, but for a limited time you can experience Wyoming's best-kept winter secret at unheard-of prices. Located in the heart of the Bighorn Mountains, the recently reopened Antelope Butte Mountain Recreation Area offers a variety of exciting outdoor adventures. Just 59 miles west of Sheridan and 35 miles east of Greybull, Antelope Butte has been providing an "old school" experience for six decades. Instead of relying on snowmaking equipment, the area enjoys plenty of natural snow thanks to its high elevation; the base of the resort sits at an altitude of 8,400 feet.

Antelope Butte's mission is to provide affordable and accessible year-round mountain recreation, training, and educational opportunities, with a focus on youth and beginners. During the winter months, Antelope Butte offers Alpine (downhill) skiing and snowboarding: a full selection of rental equipment including skis, boards and helmets is available on site; lessons will soon be offered by professional instructors. The Sun Kids Conveyor lift offers a gentle, fun experience for new skiers and boarders to get comfortable on the slopes. The Park Lift currently serves trails on the lower half of the mountain, and the Summit Lift is scheduled for opening

next year. During this inaugural season, adult lift tickets are just \$20. Antelope Butte's lifts operate on Fridays, Saturdays and Sundays, and the area will be open through March 2019 (and possibly later depending on snow levels and weather conditions).

Other winter sports include Nordic (cross-country) skiing on groomed trails, telemark skiing, fat biking, snowshoeing, and backcountry skiing for seasoned adventurers. The staff also provides avalanche and winter safety training programs. While construction continues at the new 11,400 square foot lodge, guests are reminded to bring their own food and drinks. During many weekends the Antelope Butte parking lot transforms into a tailgating party with picnics, lawn chairs, barbecue grills and music.

When the snow melts, Antelope Butte offers a host of warm-weather activities like mountain biking, hiking, mountainboarding, disc golf, scenic chair lift rides, as well as Leave No Trace and outdoor interpretive programs. The area also hosts a number of brew fests, concerts, private events, and the popular Antelope Butte Summer Festival. Antelope Butte's slogan is "Living the Mountain Life: Family, Friends, Fun!"

Visit antelopebutte.org for more information.

Photos courtesy Lisa Kunkel

**SHERIDAN
WYO
RODEO** Since 1931

**JULY 8-14
2019**

**GET
WYO'D.**

Coca-Cola

m&m's

EMIT

SHERIDAN WYO RODEO

GOLD BUCKLE CLUB

Sheridan WYO POSSE

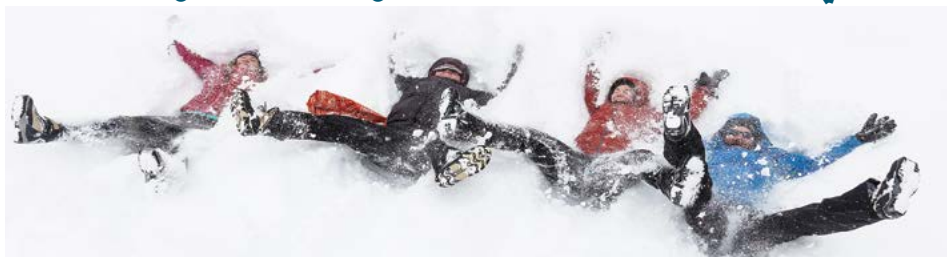
TICKETS ON SALE NOW!

GET TICKETS: SheridanWyoRodeo.com



FAMILY FUN DAY AT RED GRADE

Sunday, February 24 from 10 a.m. to 2 p.m.



FREE equipment demos by



Bring your own skis, sleds, snowshoes and fat bikes for a day of family fun!

Meet at Base Trailhead
(Hwy 335 to barricade).

Coffee/cocoa/cookies complimentary.



Sheridan
Community
LAND TRUST



POWDER HORN REALTY IS A PROUD SPONSOR OF



SHERIDAN WYO WINTER RODEO



POWDER HORN
REALTY, INC.

(307) 674-9545

PowderHornRealty.com

161 Highway 335 | Sheridan, Wyoming



Sheridan Media





Skijoring is derived from a Norwegian term that roughly translates to “Ski Driving”. The activity is centuries-old, and dates to a time when people used dogs, reindeer or horses to pull them on skis as a mode of transportation. By the 19th Century, horse drawn skiers were delivering military messages in Nordic countries.

Skijoring developed from a method of transportation and delivery to a sport first in Scandinavia, then across Europe. By the late 19th Century, skijoring was popular in dozens of nations.

By the early 1900’s, equine skijoring had found its way to North America. In 1915, it appeared as a recreational activity in Lake Placid, New York and beginning in 1916 was



THE HISTORY OF SKIJORING

a regular pastime at the Dartmouth Winter Carnival in Hanover, New Hampshire. In 1928, Skijoring made its first and only appearance at the Winter Olympics in St. Moritz, Switzerland, on a flat, frozen lake.

When World War II ended, men from the 10th Mountain Division, or “Soldiers on Skis”, returned home. There were no ski resorts or lifts back then, so their cowboy friends attached a long rope to their saddle horn, and the skier held on as the horse was ridden at high speeds down a long straight-away - usually an open field or a snow-covered road. Mountain towns like Jackson Hole, Wyoming and Steamboat Springs, Colorado took up the sport, often running teams of horse, rider and skier side by side down main streets, in a sport similar to cutter racing.

Skijoring had all but vanished from the popular consciousness by the 1960s - the development and popularization of ski lift and mechanical towing methods had rendered winter horse travel redundant. Yet the sport endured in some frozen pockets of the world.

Today, equine skijoring is a highly specialized competitive sport, where horses accelerate to over 40 mph in just three strides covering a straight track roughly 900 feet in length. Skiers must navigate a series of jumps and gates and capture rings while being pulled by a rope at speeds up to 60 mph as they accelerate around turns.

The first Sheridan WYO Winter Rodeo is a callback to the history of early skijoring races, and an homage to the icons, outlaws and history of Sheridan, Wyoming.

Proud event printer of the inaugural
Sheridan WYO Winter Rodeo.



EVENT MARKETING & PRINTING SERVICES

Programs • Posters • Banners
And many more! Give us a call or email today.

alphagraphics

1235 N. Main St. in Sheridan
(307) 674-6277
sheridan@alphagraphics.com

Sheridan Media
SheridanMedia.com



Sheridan
... WYOMING ...

EXPERIENCE SHERIDAN'S HISTORIC ATTRACTIONS IN 48 HOURS

Day 1. Experience the industrial west at the Nelson Inn (2), Sheridan's newest boutique hotel. The suites sleep four to six people, and feature vintage charm, modern lines, and highlight a chic interplay between pure form and function. After breakfast take a drive to the Little Bighorn Battlefield National Monument, the site of the 1876 battle between Custer's 7th Cavalry and a combined Lakota-Northern Cheyenne and Arapaho force. Return to Sheridan and enjoy the old west marvels at the Don King Museum. The museum features rare firearms, horse-drawn hearses, an old west photo archive, a vast collection of hand-crafted saddles, ropes and leather work, Indian artifacts, and much more.

Before dinner, tour the Trail End State Historic Site (4). Built in Flemish Revival style, the Trail End mansion provides an elegantly different vision of Sheridan's rich and colorful history. Sit down for supper at Wyoming Cattle & Creek or Birch Restaurant (3) for a taste of wild Wyoming fare or fine western dining, respectively. Day 2. Rise to beat the crowds of history buffs and tour Indian battle sites and former military posts, including the Rosebud and Connor Battlefields, the site of the Wagon Box Fight, and finally picturesque Fort Phil Kearny, located on the Bozeman Trail. The new Skylab at Fort Phil is a thrill for stargazers. Plan to spend a few hours exploring The Brinton Museum (5) in Big Horn for a look at one of the most robust collections of Indian and western artifacts in the United States.

WYOMING'S EMERALD GEM, SHERIDAN BLENDS QUINTESSENTIAL COWBOY CULTURE, MODERN WEST ALLURE AND COUNTRY CHARM.

UNWIND AT THE HISTORIC MILL INN

This historic property was once the Sheridan Flouring Mills, a company that owned 13 grain elevators from Hardin, MT to Gillette, WY and was once the largest tax payer in Wyoming. The original mill was established in the early 1890's but was destroyed by fire. The current Coffeen Ave structure was built in 1919. The Moody family purchased and renovated the property in 1992 with an eye on historic preservation and restoration. *The Best Rest Out West* has been a reality for visitors to Sheridan ever since. sheridanimillinn.com

Save plenty of time to shop Historic Downtown Sheridan. Visit Crazy Woman Trading Co., High Mountain Mercantile, Sheridan Stationery and Books, Tom Balding Bits and Spurs, the Bozeman Gallery, Brian's Boots and other western-centric boutiques and galleries. Downtown Sheridan features incredible public art, beautifully restored historic buildings, and the iconic WYO Theater (1), opened in 1923. Grab lunch at the new Smith Alley Brewing Co. & Public House (6), then visit the Sheridan County Museum; the museum boasts a vast archive of historical images, artifacts and letters, and serves as an excellent exclamation point on your tour. Enjoy Happy Hour at Blacktooth Brewery, Luminous Brewhouse or The Mint Bar. After dinner, kick up your boots on the porch of the Historic Sheridan Inn the way Buffalo Bill once did, and watch the sun set on your time in Sheridan. For additional itineraries, history and tall tales of the icons and outlaws of Sheridan visit us at sheridanwyoming.org.





BIGHORN MOUNTAIN ARITHMETIC.

Winter and Wyoming equal epic adventure. Sheridan County is home to three mountain lodges, Antelope Butte Mountain Recreation Area, legendary Canyon and historic Eaton's Ranch, and numerous hotels offering sensational winter programs.

With more than 200 miles of groomed winter trails the Bighorns are an outdoor paradise for snowmobile enthusiasts, skijorers, x-country + backcountry skiers, ice climbers, snowshoers, fat bikers and folks on the hunt for that perfect Instagram moment. #VisitSheridan

Stoke your fire in Sheridan, a vibrant mountain town with a rich ranching history, spectacular arts culture, excellent restaurants, and a thriving craft scene. Visit iconic landmarks like the Sheridan Inn, the Mint Bar, Kings Saddlery, Surf Wyoming, Fort Phil Kearny, Trail End State Historic Site, and a hundred other destinations to après ski.

www.sheridanwyoming.org



Member
FDIC

FIRST FEDERAL
BANK & TRUST

www.efirstfederal.bank

**BRANCH OUT
ON YOUR
NEXT PROJECT**



EMBROIDERY | SCREEN PRINT | SIGNS | DESIGN

171 N. Main St. - Downtown Sheridan - Online at bighorndesign.com



L.J.S. Concrete & Excavating



Driveways

Roads

Trucking

Foundations

Utility Lines

Septic Systems

Sewer Repair

Trenchless Burst

And More...

J.B. Skinner

Owner | Operator

Licensed | Bonded | Insured

PH | (307) 752-9912

P.O. Box 505

Big Horn, Wyoming 82833

Email | jb.skinner@yahoo.com

For all of your Commercial, Residential, & Agricultural needs



2019 RACE SCHEDULE

Member Races adhere to Skijoring America's Handbook of Rules, Regulations, and Recommendations. Therefore, member races have a sense of unity, safety, and organization that Skijoring America cannot guarantee at non-member races.

SAN JUAN SKIJORING

Ridgway, CO
January 12th & 13th

WOOD RIVER EXTREME SKIJORING

Hailey, ID
February 16th & 17th

SKIJOR LINCOLN

Lincoln, MT
January 19th & 20th

WYO WINTER RODEO

Sheridan, WY
Feb 23rd & 24th

WORLD INVITATIONAL

Whitefish, MT
January 26th & 27th

SKIJORING AT REBECCA FARM

Kalispell, MT
March 2nd & 3rd

BEST IN THE WEST SHOWDOWN

Big Sky, MT
February 9th & 10th

RED LODGE NATIONAL FINALS

Red Lodge, MT
March 9th & 10th

SKIJORING AMERICA REGIONS

GLACIER

Kalispell, MT
Whitefish, MT
Lincoln, MT
Big Sky, MT
Hailey, ID

OPEN SPACES

Lincoln, MT
Red Lodge, MT
Big Sky, MT
Sheridan, WY

SOUTHERN

Ridgway, CO
Big Sky, MT
Hailey, ID
Sheridan, WY

2019 CALENDAR OF EVENTS

JANUARY 2019

- 1st - Polar Bear Plunge
- 1st - First Day Hike

FEBRUARY 2019

- 16th - Tasty Tailgate Competition
- 2nd - CANTUS Vocal Ensemble
- 22nd - Sheridan WYO Winter Rodeo

MARCH 2019

- 1st - Wild West Wine Fest
- 2nd - Vintage Nordic Ski Races
- 8th - Home and Garden Show
- 8th - Ballet Jörgen & Billings Symphony
- 9th - Leprechaun Leap 5K
- 9th - Red Shed Redos Grand Opening
- 15th - Robert Cline Jr. at Luminous
- 16th - Sheridan Jackalope Jump
- 16th - Run Till You're Green
- 26th - Glenn Miller Orchestra

APRIL 2019

- 1st - Trail End Historic Site opens
- 1st - Ft. Phil Kearny Site opens
- 4th - King Lear at the WCA
- 5th - Startup Weekend
- 6th - Bart Crow at Blacktooth
- 11th - Sheridan College Symphony
- 12th - FAB Women's Conference
- 23rd - Banff Mountain Film Fest
- 25th - Celebrate the Arts
- 27th - John Roberts y Pan

MAY 2019

- 1st - County Museum opens
- 3rd - Tris Munsick & The Innocents
- 3rd - Snickers Big Horn Soccer Cup
- 4th - Wyoming Baroque
- 11th - The Brinton Leather Show
- 17th - Rocky Mountain Leather Show
- 26th - Eaton's Horse Drive

JUNE 2019

- 1st - Local Foods Market
- 1st - Bot Sots Remount Horse Sale

- 1st - Dead Swede 100 Bike Race
- 4th - Artists in Residency at SAGE
- 5th - Start of Polo Season
- 13th - Bighorn Mountain Trail Run
- 15th - Birding at the Brinton
- 20th - SAGE Photography Show
- 21st - 3rd Thursday Street Festival
- 21st - Forever West PBR
- 29th - Karz Hot Rod Run
- 29th - Bighorn Mountain Brewfest

JULY 2019

- 4th - Equestrian Center Fireworks
- 10th - 89th Sheridan WYO Rodeo
- 11th - Corb Lund at the Pony
- 12th - First People's Pow Wow
- 19th - Antelope Butte Summer Fest
- 19th - 3rd Thursday Street Festival
- 20th - Mega Monster Truck Tour
- 29th - Sheridan County Fair
- 28th - Tournament of Knights

AUGUST 2019

- 10th - Absaroka Car Show
- 10th - Bike MS Wyoming
- 15th - Bighorn Mountain Jeep Jamboree
- 16th - 3rd Thursday Street Festival
- 24th - Suds n' Spurs Brewfest
- 9th - Sheridan County Rodeo
- 24th - Sheridan Elks Youth Rodeo
- 30th - Devilstone Run
- 30th - Blacksmithing Championships

SEPTEMBER 2019

- 1st - Don King Days
- 7th - Balloon the Bighorns
- 6th - Born in a Barn
- 20th - 3rd Thursday Street Festival
- 28th - Black Tooth Oktoberfest

OCTOBER 2019

- 4th - Sheridan WYO Film Festival
- 4th - Biketoberfest
- 5th - Full Moon Fort
- 19th - WYO Theater Gala